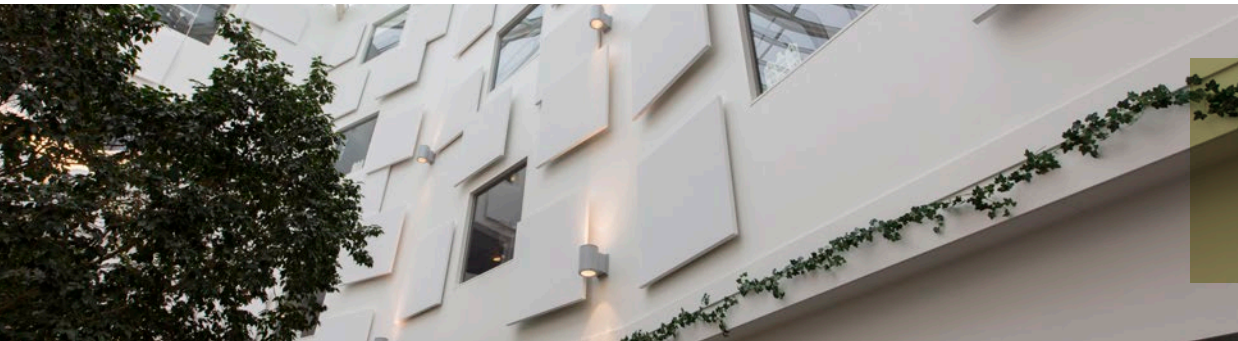


Product Sustainability Declaration

Rockfon Eclipse® wall panel



Our sustainable commitment

Our commitment to sustainability is guided by our deep-rooted values and the ROCKWOOL commitment to enrich the lives of everyone who comes into contact with our products.

Rockfon® high-quality ceiling solutions provide excellent longevity and life-cycle value. Our ceiling solutions deliver acoustic comfort by reducing noise and sound reverberation, helping to improve working, learning and healing environments.

Our product sustainability declaration is set around major sustainability building schemes, detailing the sustainable characteristics of this product. The document helps provide a clear and quick overview to architects, specifiers and property owners alike.

The sustainability declaration

- Sourcing of raw materials
- Environmental product declarations
- Indoor health properties
- Material ingredients
- Corporate sustainability reporting



Performance



Sound absorption

A_{eq} (m²/item)



Humidity and sag resistance

Up to 90% RH
Rockfon Eclipse is not suitable for use in swimming pools or outdoors.
For more information, please contact Rockfon.



Reaction to fire

A1
Rockfon Eclipse Rectangle 2360:
A2-s1,d0



Environment

Fully recyclable



Light reflection and light diffusion

87% light reflection (rear side: 79%)
>99% light diffusion



Hygiene

Stone wool provides no sustenance to microorganisms

LEED® v4 Highlights

Materials and resources (MR)

- Construction & Demolition Waste Management Planning
- Interiors Life Cycle Impact Reduction - Design for Flexibility
- Building product disclosure and optimisation - environmental product declarations
- Building product disclosure and optimisation - sourcing of raw materials
- Building product disclosure and optimisation - material ingredients
- Construction and demolition waste management

Indoor Environmental Quality (EQ)

- Low-emitting materials
- Interior lighting
- Acoustic Performance

BREEAM® International Highlights

Health and Wellbeing

- Hea 01 Visual comfort
- Hea 02 Indoor quality
- Hea 05 Acoustic performance

Materials

- Mat 01 Life cycle impacts
- Mat 03 Responsible sourcing of construction products
- Mat 06 Material efficiency

Waste

- Wst 01 Construction waste management
- Wst 04 Speculative finishes
- Wst 06 Functional adaptability



Environment

Sourcing of raw materials

Recycled content

The average recycled content of the mineral wool core in Rockfon products is >40%. Including facings (paint and glass fleeces) the recycled content of the full product is between 32 and 43% according to ISO 14021.

The recycled content is primarily post-industrial/pre-consumer.

The information provided under recycled content is self-declared.

Responsible sourcing

>90% of all suppliers identified as key suppliers to the ROCKWOOL Group have currently signed the ROCKWOOL Code of Conduct for Suppliers.

The ROCKWOOL Code of Conduct addresses laws and standards compliance, equal opportunities, trade union recognition, fair employment, safe and healthy working conditions, no child labour, sound environmental principles, purchasing ethics and bribery.

End-of-life recycling

This product is applicable for upcycling or end-of-life recycling at the nearest local ROCKWOOL recycling plant. All returned waste products will be upcycled to virgin fibres used for new stone wool products. Recycling construction and demolition waste reduces the amount of waste that is sent to landfill and incineration facilities.

Environmental product declarations

Self-declared EPDs are based on data generated by The Right Environment and verified against the EN15804 EPD standard by an independent third party.



Product health

Low emitting materials

Low Emissions

This product is certified for low emissions. Laboratories employed by Rockfon are accredited under ISO/IEC 17025 for the applied test methods. Please consult the emissions table on the following page for additional information.

Material ingredients

Material ingredients

Rockfon materials are regularly screened against the REACH candidate list; biocides/pesticide, flame retardants Azodyes, nitrosamines and aromatic amines, halogenated compounds, nanomaterials, plastic softeners, surfactants and classified substances, among others, by an independent third party (Alttox Ltd).

General cut off concentrations 100 ppm. Stone wool inventory threshold 1000 ppm (0.1%).

Fibres

The Rockfon stone wool core is a non-hazardous material to work with. This fact is supported by the decision of the World Health Organisation's International Agency for Research on Cancer (IARC) to exempt stone wool from its list of "possibly cancer causing agents".

Rockfon stone wool core is certified to comply with the Note Q for safe mineral wool fibres of EU Regulations (EC) No 1272/2008 and Directive 97/69/EEC.



Corporate sustainability reporting

Sustainability reporting

The ROCKWOOL Group Sustainability report covers the calendar year and is in line with the Global Reporting Initiative (GRI G4) guidelines.

The report is available for download on www.rockwoolgroup.com/sustainability

Product summary table

The following table is categorised by edge type and provides all relevant information related to the products sustainability profile.

	Module size (mm)	Recycled content	Emissions Labels						Substance Screening	Fibre Chemistry		Substance Screening			
			E1	Danish Indoor Climate Label	Blauer Engel	M1	SGBC	Singapore Green Label	ISO 14001	EUCEB	RAL	REACH	BREEAM NO A20 list	Screened According To RAL-UZ 132	
A	1160 x 1160 x 40	41%	✓	✓	-	✓	-	✓	✓	✓	✓	✓	✓	✓	✓
	1760 x 1160 x 40	41%	✓	✓	-	✓	-	✓	✓	✓	✓	✓	✓	✓	✓
	2360 x 1160 x 40	41%	✓	✓	-	✓	-	✓	✓	✓	✓	✓	✓	✓	✓
	800 x 800 x 40	41%	✓	✓	-	✓	-	✓	✓	✓	✓	✓	✓	✓	✓

Material ingredients table

Rockfon stone wool acoustic ceiling tiles produced in Europe complies with REACH: Regulation (EC) No 1907/2006 of the European Parliament and of the Council of 18 December 2006 concerning the Registration, Evaluation, Authorisation

and Restriction of Chemicals (REACH). Rockfon ceiling tiles do not contain substances of very high concern (SHVC) in concentrations >0.01% (100 ppm).

Substances	E.C. Number ¹⁾	Amount weight (%)	REACH Regulation	REACH substances registration number	Function
Stone wool	926-099-9	73-97%	Not classified	01-211-947-2313-44	Core insulation material
Binder, a thermoset inert polymer resin	Proprietary composition	<4%	Not classified	No number	Structural binder
Mineral oil	Proprietary composition	<0,2%	Not classified	No number	Water repellent
Non-woven glass wool facing	Proprietary composition	1-15%	Not classified	No number	Facing
Water based paints	Proprietary composition	0-16%	Not classified	No number	Decorative finish
Glue	Proprietary composition	0,01	Not classified	No number	Glue

1) E.C.: EC-no, determined by the European Commission for identifying materials

01.2019 | This document is valid 3 years from date created.

All colour codes mentioned are based on the NCS - Natural Colour System® property of and used on licence from NCS Colour AB, Stockholm 2017. Subject to alterations in range and product technology without prior notice. Rockfon accepts no responsibility for printing errors.

Rockfon® is a registered trademark of the ROCKWOOL Group.

Please ensure that you are using the product sustainability declaration relevant for your country/region. Our products and solutions are available across a number of countries and our website features product information and product downloads that may vary from country to country. Product range, product data and product documentation found on a country-specific website is intended for use ONLY in that particular country unless otherwise explicitly stated so.

This document may include technical inaccuracies or typographical errors. In no event shall ROCKWOOL International A/S be liable for any direct, indirect or consequential damages or any other damages whatsoever resulting from loss of use, data or profits, whether in an action of contract, negligence or other action, arising out of or in connection with the use of information available from this document.

COPYRIGHT NOTICE. Copyright © ROCKWOOL International A/S, Hovedgaden 584, 2640 Hedehusene, Denmark. All rights reserved.

Rockfon
 ROCKWOOL Limited T/A Rockfon
 14th Floor, Chiswick Tower, 389 Chiswick High Road,
 London W4 4AL
 Tel: +44 (0) 208 222 7457
 www.rockfon.co.uk